

Luke Cissell

(The Myth of)
INFINITE PROGRESS

Fantasies and Loops
for Solo Violin

written as a companion piece to
"GUIDE; or, A Man In A White Linen Suit Speaks the Following"
by Cara Marsh Sheffler

NOTE TO THE PLAYER: The music that follows should hew to a rustic fiddle-style sound throughout. Tasteful improvisation to this effect would not in the least violate the spirit of this piece. The "loops" in particular, designed to give a considerable amount of freedom to any performer engaged in a tandem staging/performance with *Guide*, should be thought of as guidelines to be adapted however the player sees fit. Double barlines indicate where a given passage ends and may either be repeated or swapped out for any of the passages (A, B, C) that follow in a given loop.

Violin

(The Myth of)
INFINITE PROGRESS
Prelude

Andante

Luke Cissell

roll finger languidly

ppp non vibrato *molto cresc.* *f ad libitum*

6

13

22

29

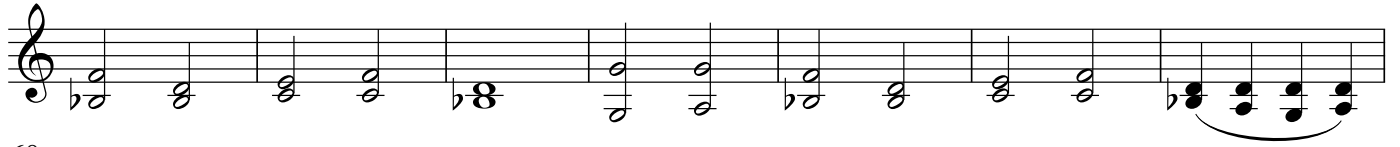
36

44

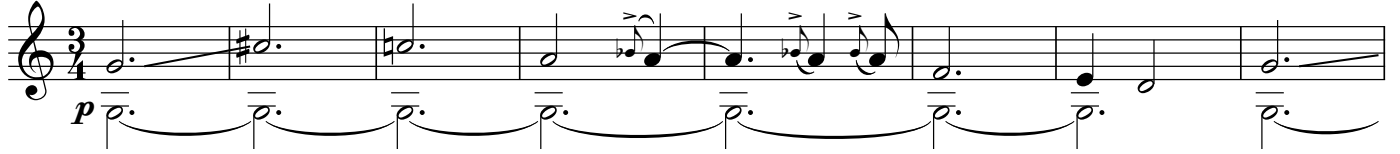
53

* these grace notes should be executed like slides into the following pitch

61



68



76



< fp

*gradually
sul pont.*

Charlotte

Adagio

mp remorseful

6

11

16

Poco più mosso
Swung

22

Straight

pp leggero

28

rit. *mp*

33

38

p

44

sotto voce *f* *p* *mp*

51 *dolce* *con moto* *f*

57 *spp* *mp* *tranquillo*

62

67 **Poco più mosso** *leggiere*

72

76 *stringendo e cresc.*

80 *f*

82 *rit.*

Loops

Loop #1 - Places & Pages

Moderato, swung  **A**



B

C

Rhythmically straight

Loop #2 - Frontier

fingertpicked guitar-style



for each measure, start at
a moderate tempo and
repeat figure approx.
ten times with molto accel.